

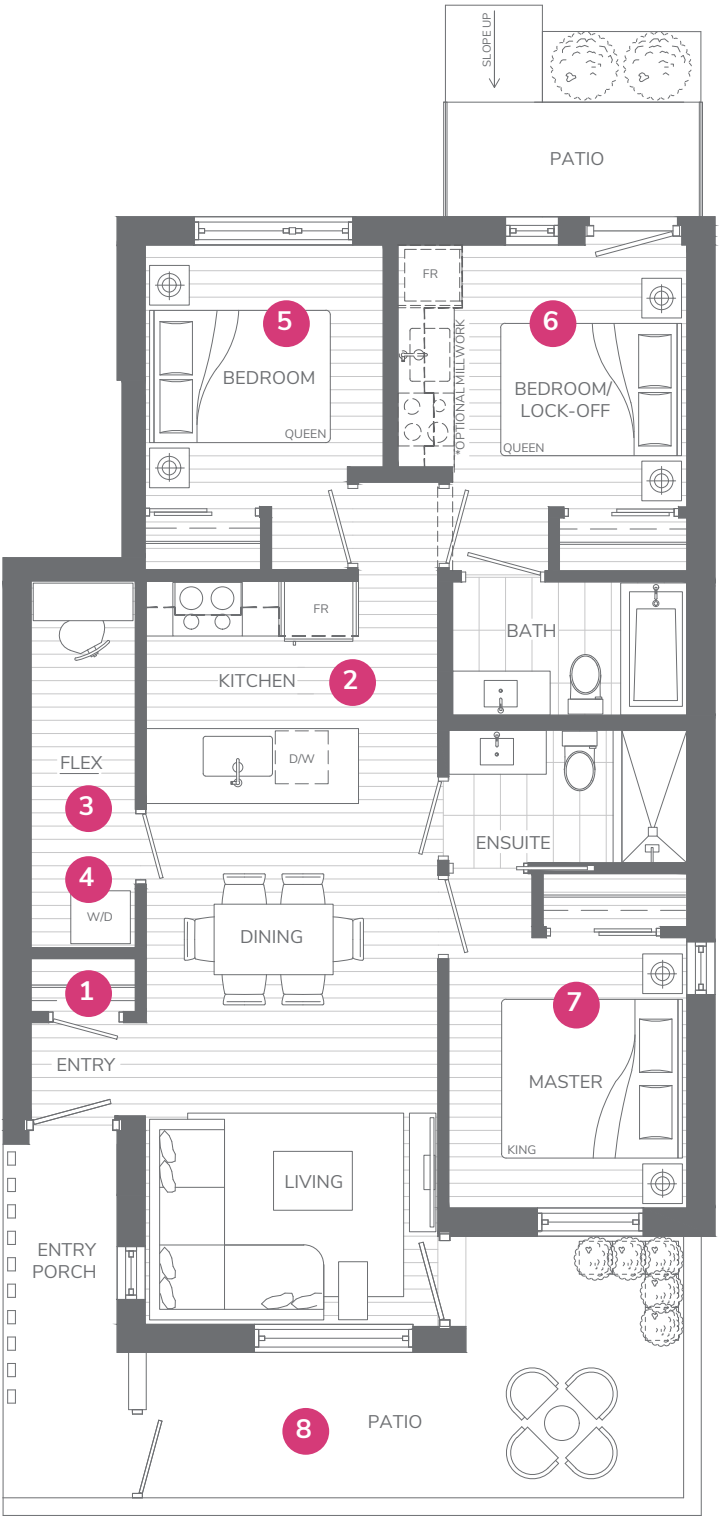
Plan A

3 BEDROOM + 2 BATH + FLEX

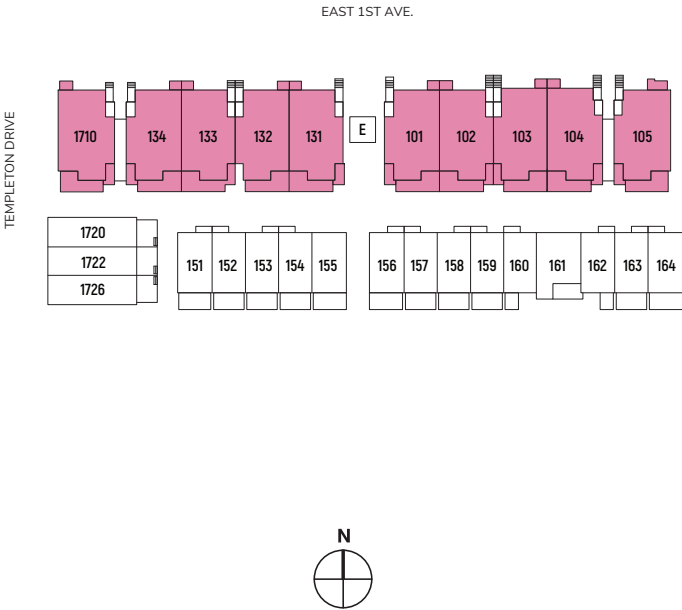
Homes: 101, 102, 103, 104, 105, 131, 132, 133, 134, 1710
Interior: 980-1,020 sq. ft. | Exterior: 150-155 sq. ft.

HOME HIGHLIGHTS

- 1. Front porch with convenient entry closet
- 2. Spacious U-shaped kitchen with generous counter space
- 3. Large adaptable flex-space for storage or home office
- 4. High-efficiency washer and dryer
- 5. Spacious bedrooms allow for queen-sized beds
- 6. Optional mortgage-helper lock-off suite with private patio
- 7. Spacious master bedroom that allows for a king-sized bed and ensuite bathroom
- 8. Generous patio off living area for entertaining and outdoor living



FIRST FLOOR



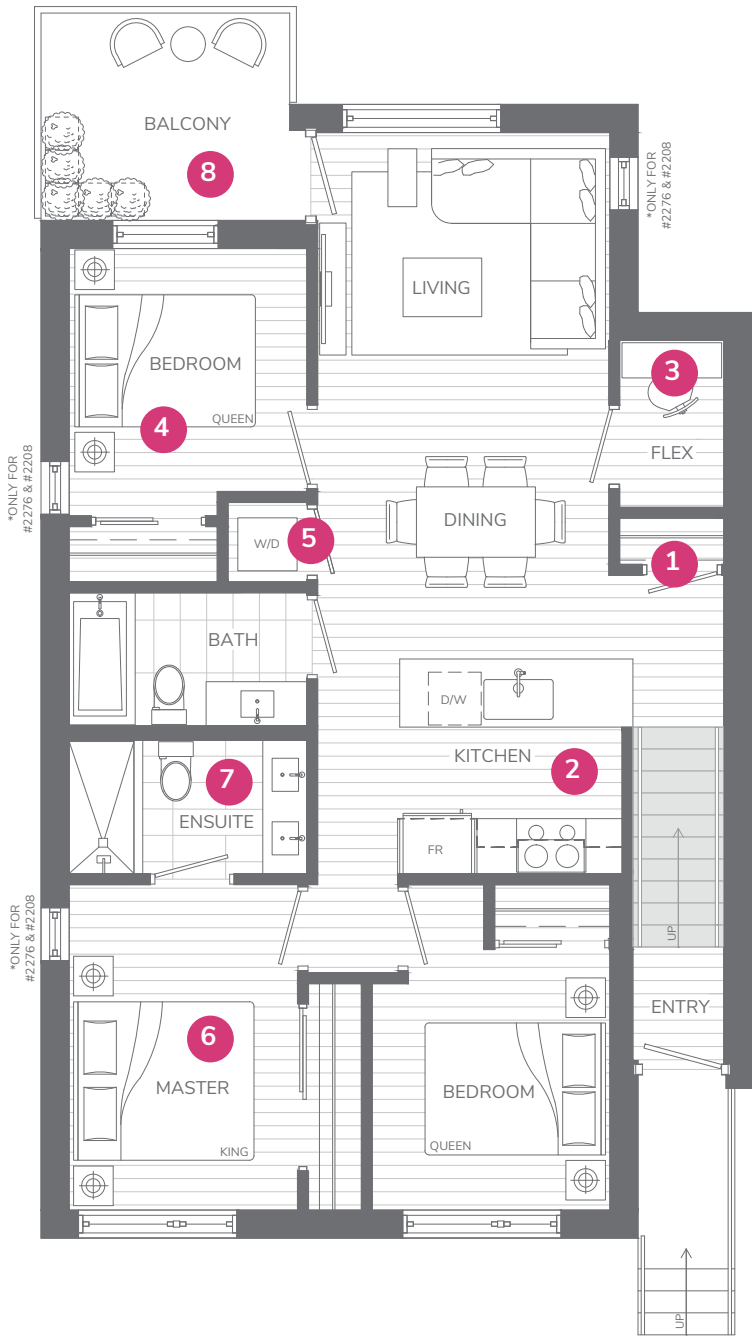
Plan B

3 BEDROOM + 2 BATH + FLEX

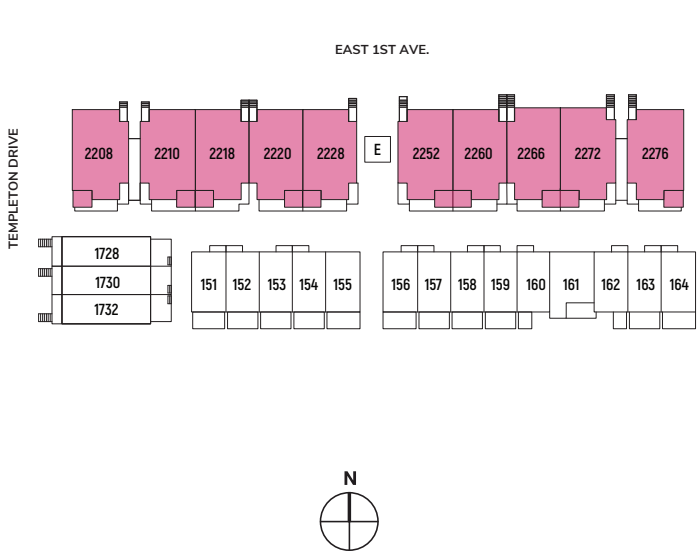
Homes: 2208, 2210, 2218, 2220, 2228, 2252, 2260, 2266, 2272, 2276
Interior: 1,045-1,090 sq. ft. | Exterior: 70-75 sq. ft.

HOME HIGHLIGHTS

- 1. A convenient entry closet for coats and shoes
- 2. Spacious U-shaped kitchen with generous counter space and room for a dining table
- 3. Adaptable flex-space for storage or home office
- 4. Spacious bedrooms allow for queen-sized beds
- 5. High-efficiency washer and dryer
- 6. Spacious master bedroom that allows for a king-sized bed and features a large wall-to-wall closet and ensuite bathroom
- 7. Ensuite with double vanity and frameless glass shower
- 8. Generous balcony off living area for entertaining and outdoor living



SECOND FLOOR



Future Homes Built Today

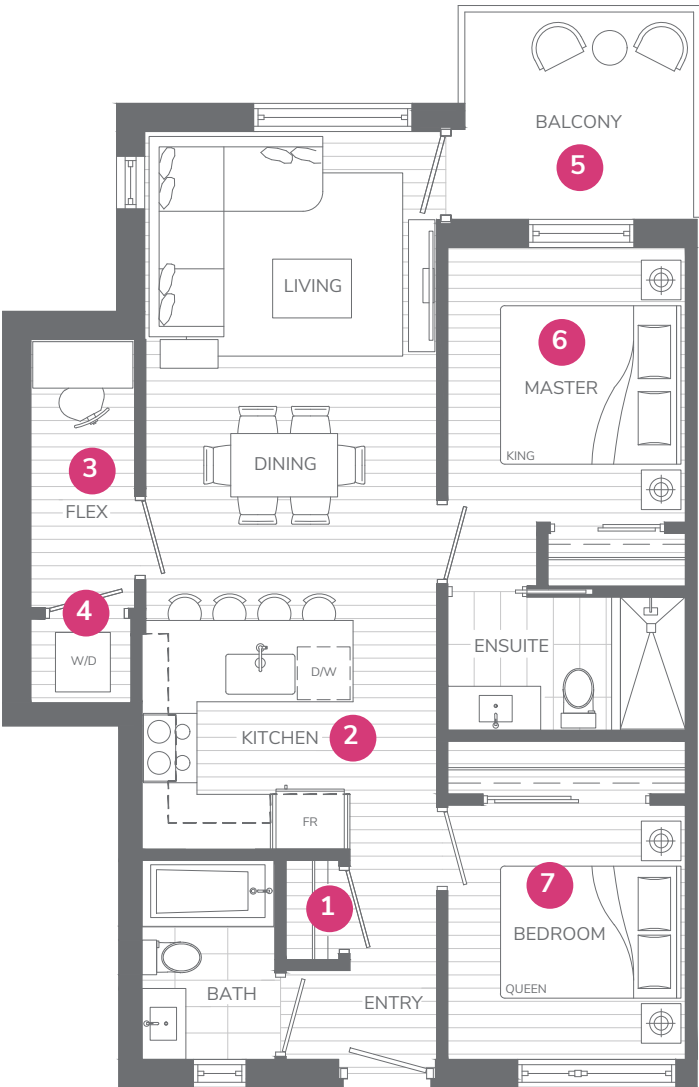
Plan C

2 BEDROOM + 2 BATH + FLEX

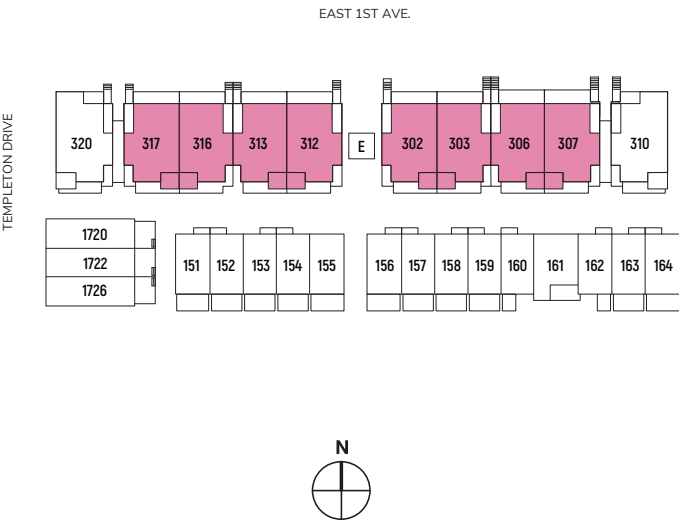
Homes: 302, 303, 306, 307, 312, 313, 316, 317
Interior: 830-840 sq. ft. | Exterior: 70 sq. ft.

HOME HIGHLIGHTS

- 1. An entry closet for coats and shoes located by the front door
- 2. Spacious U-shaped kitchen with generous counter space that allows for breakfast bar seating as well as space for a dining table
- 3. Adaptable flex-space for storage or home office
- 4. High-efficiency washer and dryer
- 5. Entertainment sized balcony off main floor for barbecue
- 6. Spacious master bedroom that allows for a king-sized bed and ensuite bathroom
- 7. Spacious 2nd bedroom allows for queen-sized bed and features a large wall-to-wall closet



THIRD FLOOR



Future Homes Built Today

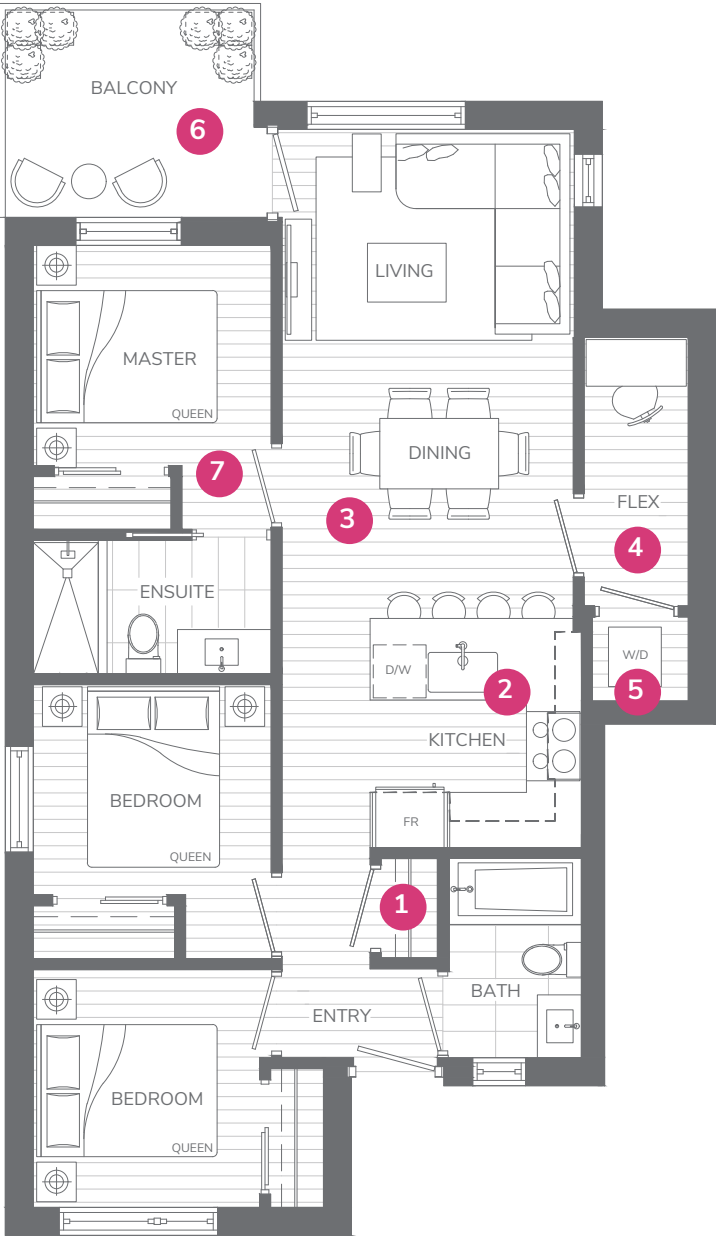
Plan C3

3 BEDROOM + 2 BATH + FLEX

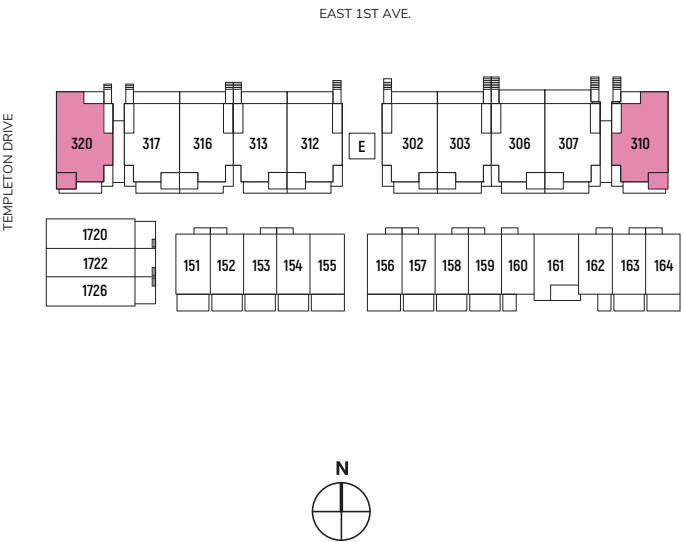
Homes: 310, 320
Interior: 935 sq. ft. | Exterior: 75 sq. ft.

HOME HIGHLIGHTS

- 1. An entry closet for coats and shoes located by the front door
- 2. Spacious kitchen with generous counter space that allows for breakfast bar seating as well as space for a dining table
- 3. Optimized and efficient layout with no wasted space
- 4. Adaptable flex-space for storage or home office
- 5. High-efficiency washer and dryer
- 6. Balcony off living area for entertaining and outdoor living
- 7. Master bedroom allows for a queen-sized bed and features an ensuite bathroom



THIRD FLOOR



Future Homes Built Today

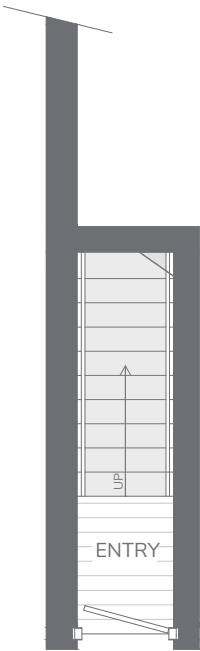
Plan D

2 BEDROOM + 1 BATH + FLEX

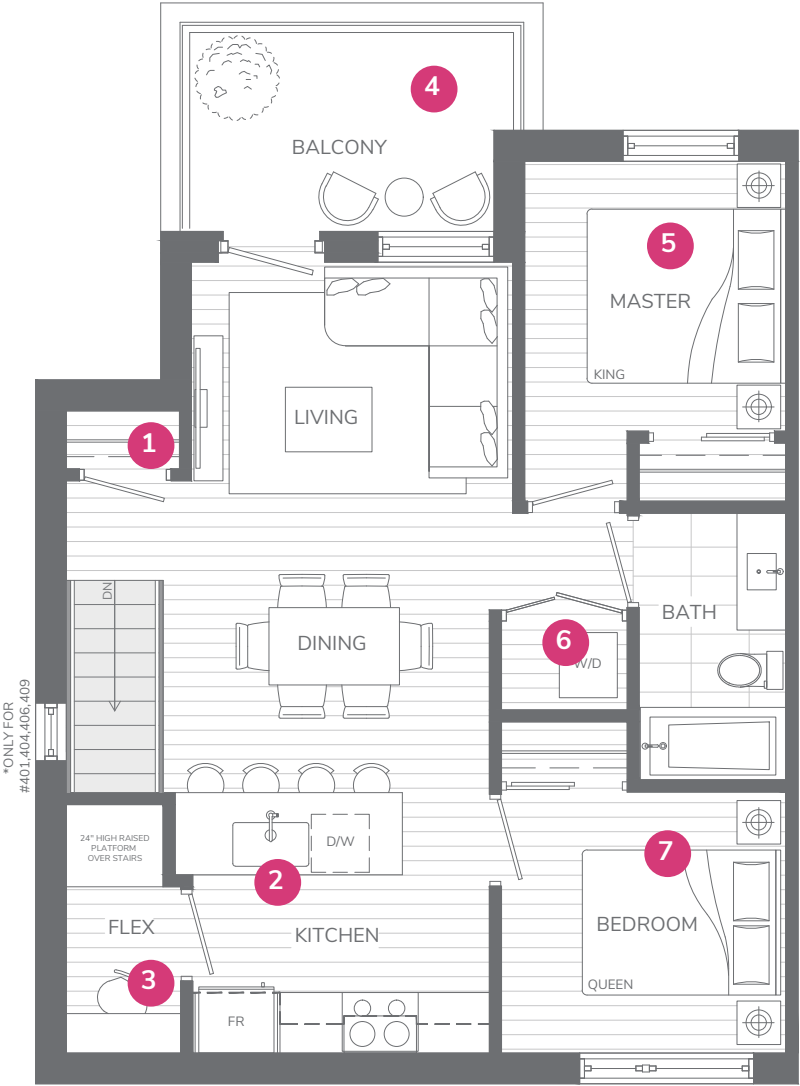
Homes: 301, 304, 305, 308, 311, 314, 315, 318
Interior: 830-855 sq. ft. | Exterior: 100 sq. ft.

HOME HIGHLIGHTS

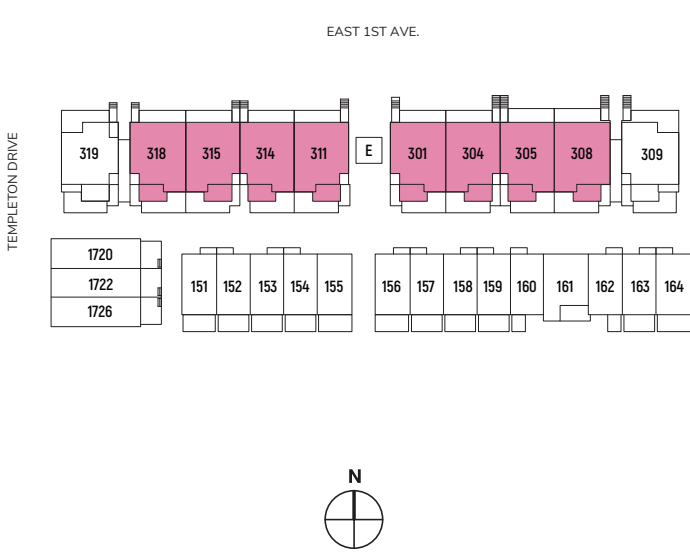
- 1. A convenient entry closet for coats and shoes
- 2. Spacious kitchen with generous counter space that allows for breakfast bar seating as well as space for a dining table
- 3. Adaptable flex-space for pantry, storage or home office
- 4. Generous balcony off main level for entertaining and outdoor living
- 5. Spacious master bedroom that allows for a king-sized bed
- 6. High-efficiency washer and dryer
- 7. Spacious bedroom allows for queen-size bed



THIRD FLOOR



FOURTH FLOOR



Future Homes Built Today

Plan D3

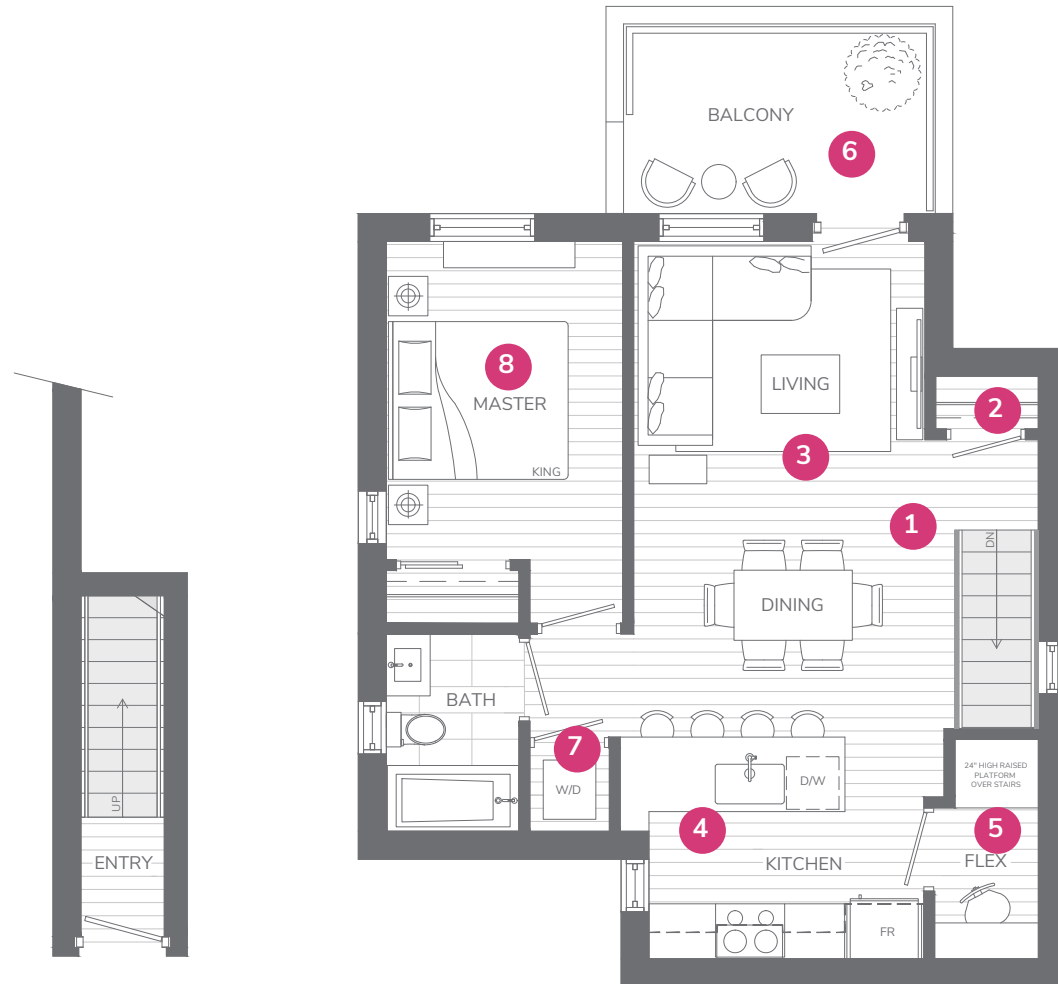
1 BEDROOM + 1 BATH + FLEX

Homes: 309, 319

Interior: 785 sq. ft. | Exterior: 105 sq. ft.

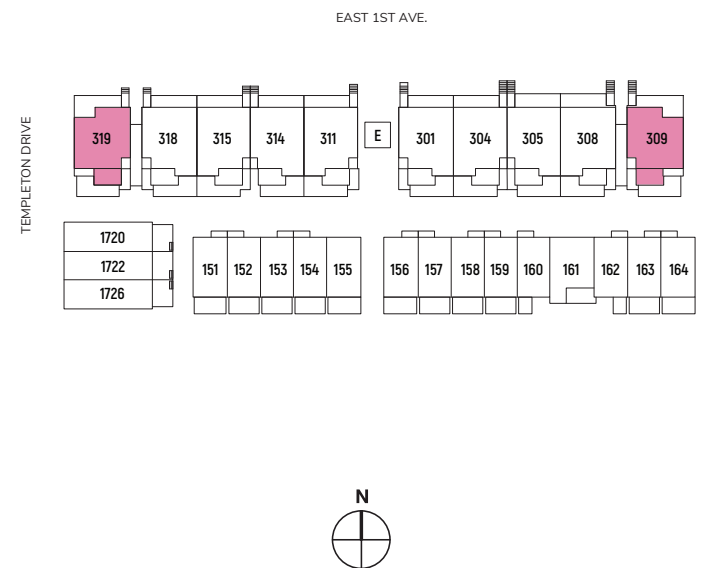
HOME HIGHLIGHTS

1. Corner home with natural light from windows on the east and west side with an oversized balcony overlooking the courtyard
2. A convenient entry closet for coats and shoes
3. Large layout with entertainment sized living and dining areas
4. Spacious kitchen with generous counter space that allows for breakfast bar seating
5. Adaptable flex-space for pantry, storage or home office
6. Generous balcony off main level for entertaining and outdoor living
7. High-efficiency washer and dryer
8. Spacious master bedroom that allows for a king-sized bed



THIRD FLOOR

FOURTH FLOOR



Future Homes Built Today

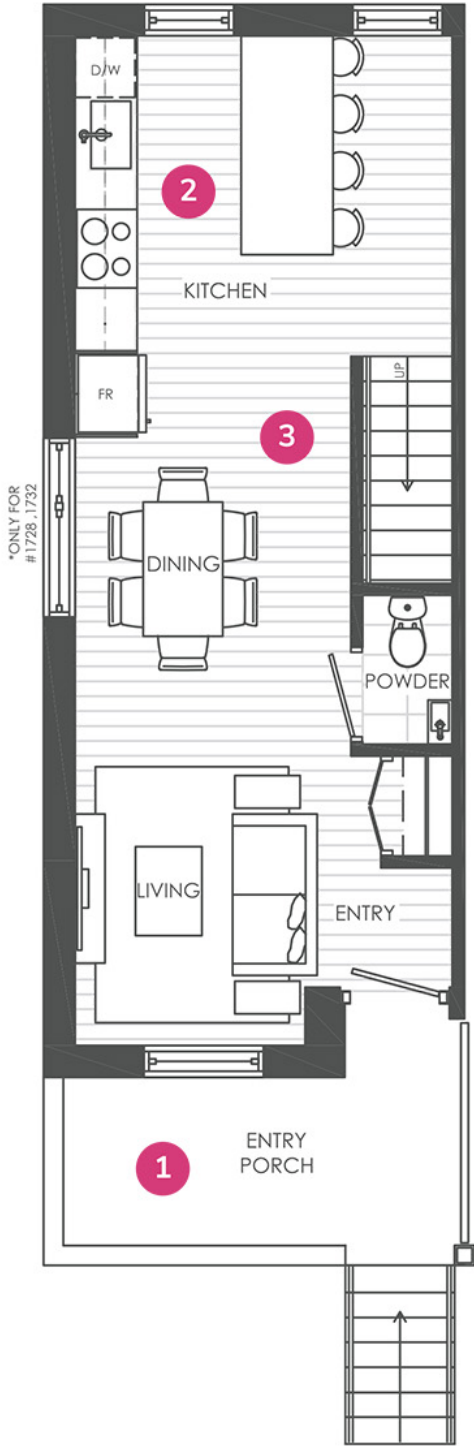
Plan E

2 BEDROOM + 2.5 BATH + FLEX

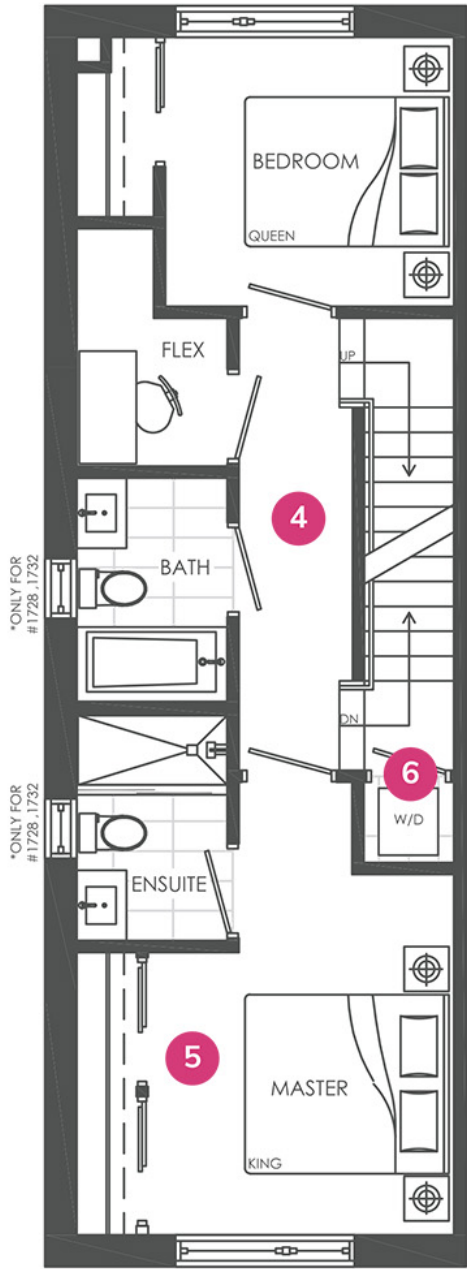
Homes: 1728, 1730, 1732
 Interior: 1,050 - 1,100 sq. ft.
 Exterior: 475 - 477 sq. ft. (Roof Deck) | 75 sq. ft. (Entry Porch)

HOME HIGHLIGHTS

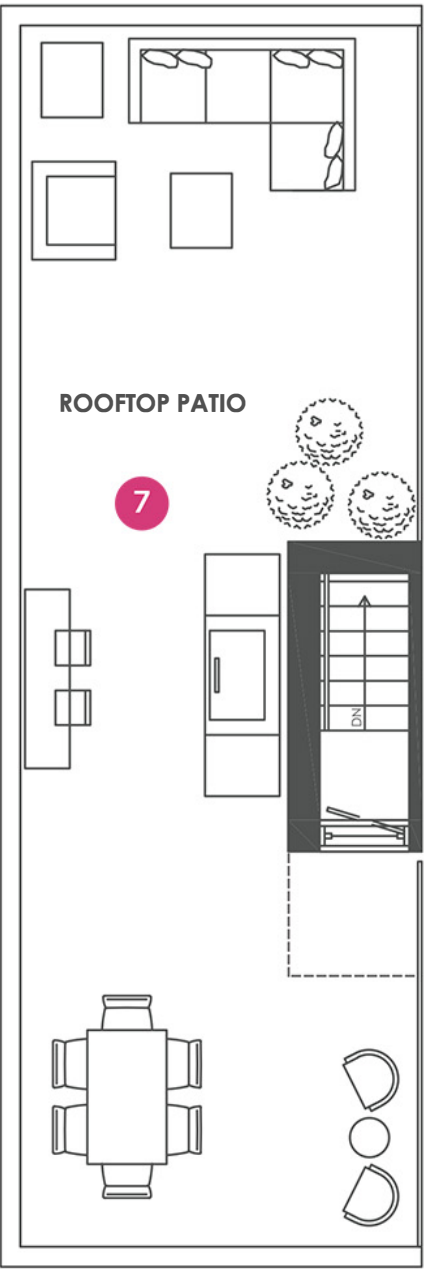
- 1. Generous front porch
- 2. Spacious kitchen with large island and seating for 4 people
- 3. Optimized layout with family-sized living and dining spaces
- 4. Adaptable flex space for storage or home office
- 5. Large bedroom to allow for king sized bed and wall to wall closet
- 6. High efficiency washer and dryer on the same level as bedrooms for convenience
- 7. Ultimate roof top deck for entertaining and enjoyment



SECOND FLOOR



THIRD FLOOR



FOURTH FLOOR
 ROOFTOP PATIO

The developer reserves the right to modify the information contained herein without notice. Prices, availability, renderings, views, building design, specifications, floor plans, finishes and sizes are subject to change and may not be accurate. This is not an offering for sale and such an offering can only be made after filing a disclosure statement. E&OE.

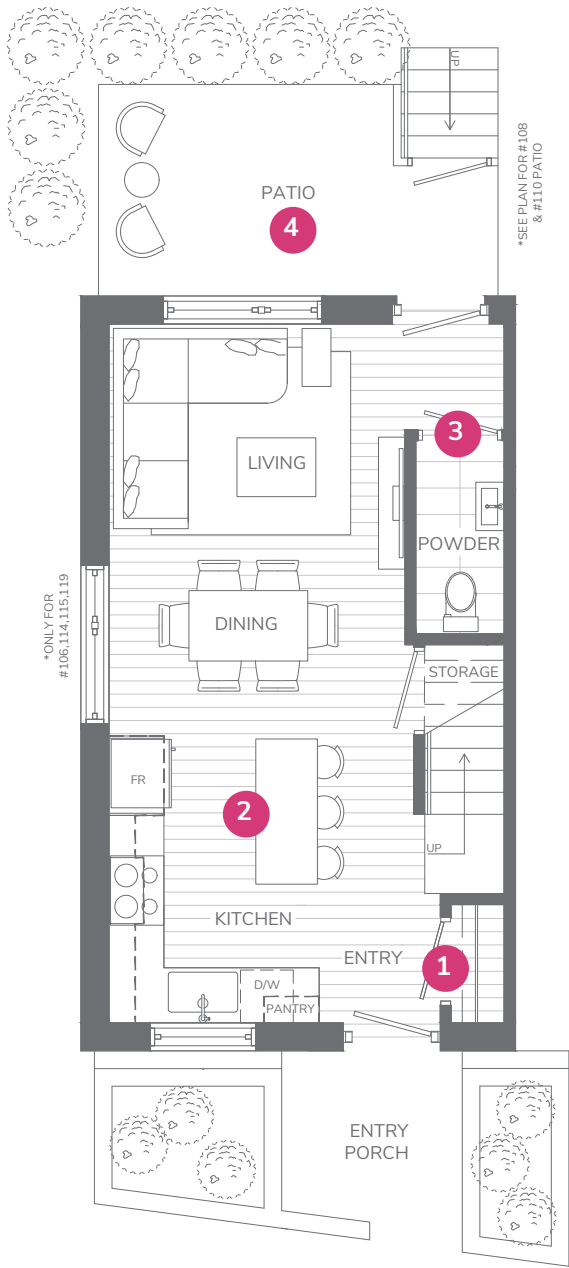
Plan F

3 BEDROOM + 2.5 BATH + FLEX

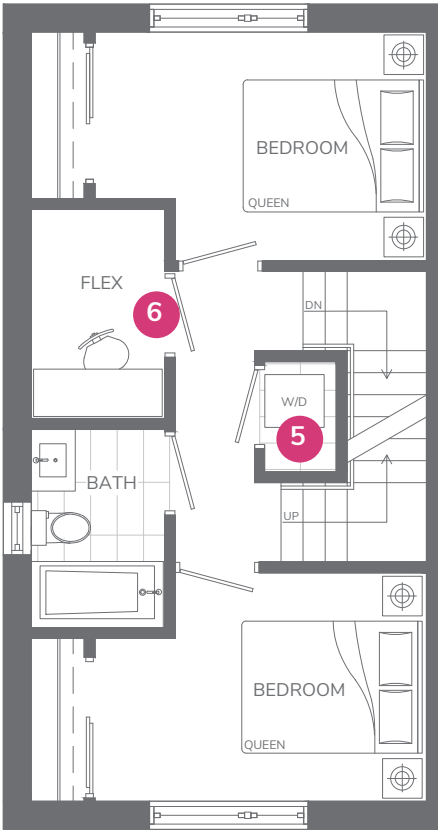
Homes: 151, 152, 153, 154, 155, 156, 157, 158, 159, 160, 162, 163, 164
Interior: 1,255-1,305 sq. ft. | Exterior: 265-295 sq. ft.

HOME HIGHLIGHTS

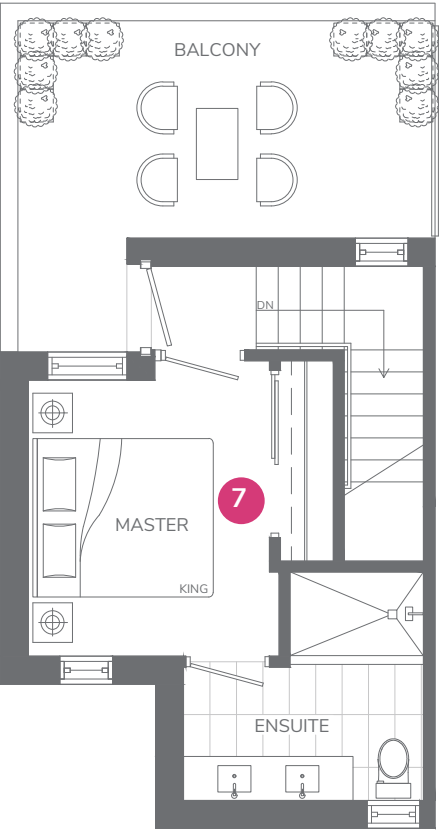
- 1. An entry closet for coats and shoes located by the front door
- 2. Spacious L-shaped kitchen and island with breakfast bar seating and space for a dining table
- 3. Convenient powder room on main level for guests
- 4. Generous patio off main level for entertaining and outdoor living
- 5. High-efficiency washer and dryer on the same level as bedrooms for convenience
- 6. Adaptable flex-space for storage or home office
- 7. Master bedroom features a whole level floorplan, spacious closet, ensuite with double vanity, and large private balcony



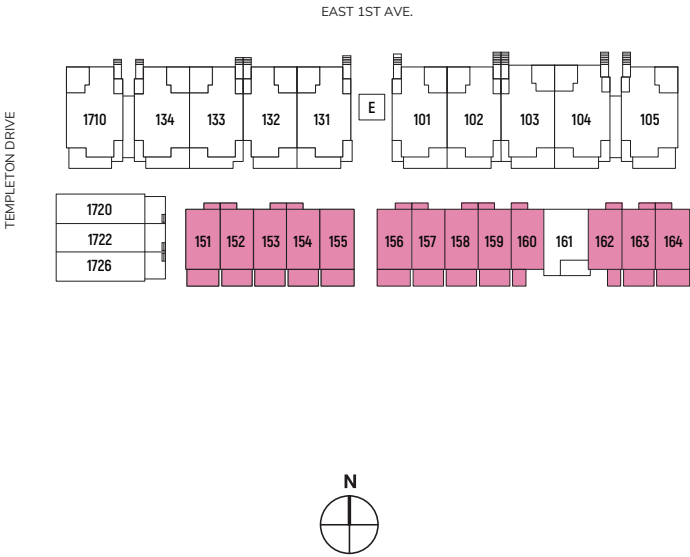
FIRST FLOOR



SECOND FLOOR



THIRD FLOOR



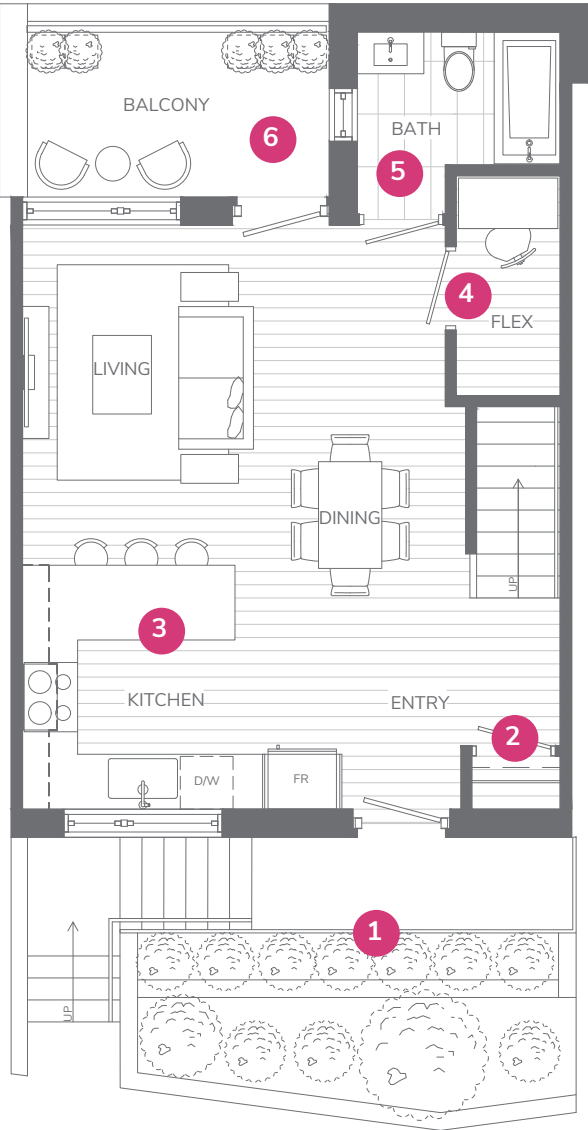
Plan G

3 BEDROOM + 3 BATH + FLEX

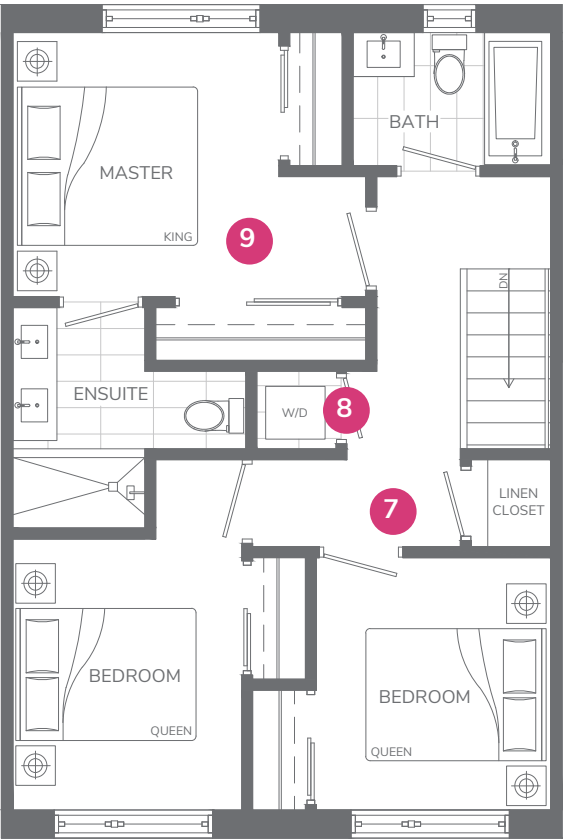
Home: 161
Interior: 1,260 sq. ft. | Exterior: 85 sq. ft.

HOME HIGHLIGHTS

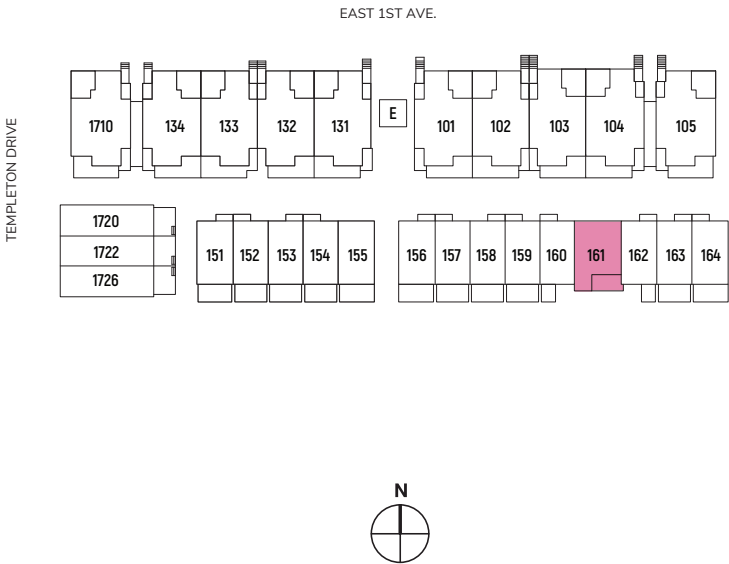
- 1. Landscaped front entrance
- 2. An entry closet for coats and shoes located by the front door
- 3. Bright kitchen with large window and generous counter space that allows for breakfast bar seating
- 4. Adaptable flex-space on main level for storage or home office
- 5. Convenient guest bathroom on main floor
- 6. Generous balcony off main level for entertaining and outdoor living
- 7. All bedrooms on the second level creates defined living spaces for families
- 8. High-efficiency washer and dryer on the same level as bedrooms for convenience
- 9. Master bedroom features ensuite with double vanity, two closets, and expansive windows



FIRST FLOOR



SECOND FLOOR



Plan H

1 BEDROOM + 1 BATH + FLEX

Homes: 1720, 1722, 1726
Interior: 570-595 sq. ft. | Exterior: 125-130 sq. ft.

HOME HIGHLIGHTS

- 1. Generous front porch
- 2. Spacious L-shaped kitchen with generous counter space
- 3. High-efficiency washer and dryer
- 4. Adaptable flex-space for storage or home office
- 5. Bathroom features shower with frameless glass door
- 6. Spacious bedroom allows for a queen-sized bed



FIRST FLOOR

